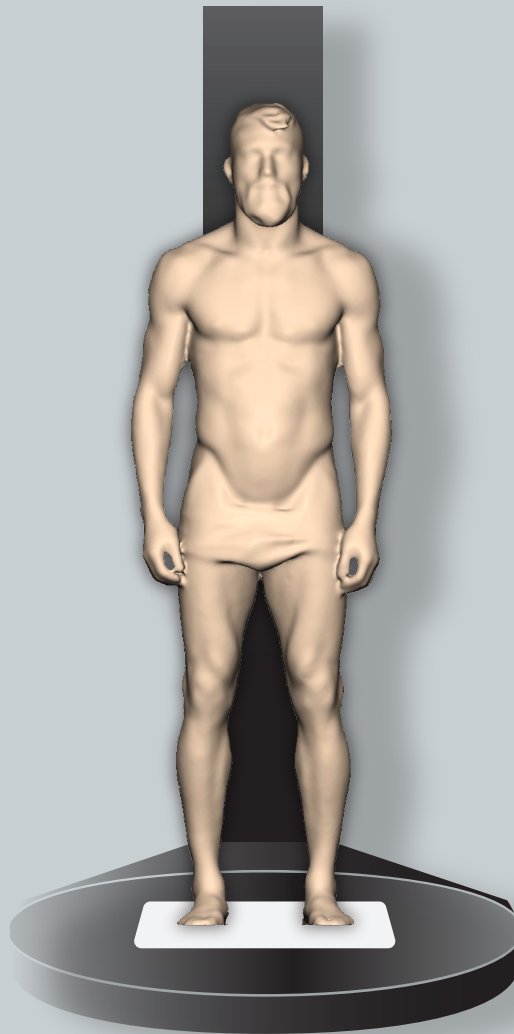




# 3D POSTURAL AND METABOLIC ANALYSIS

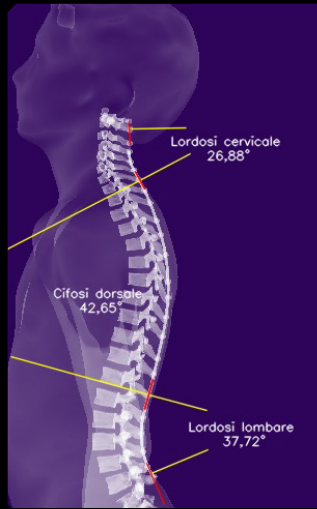
**2IOREDIX**

DIAGNOSTIC INNOVATION IN POSTURE AND HEALTH

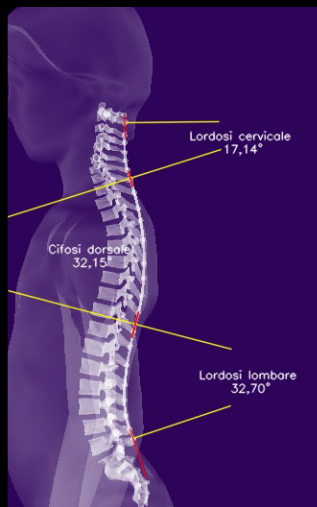
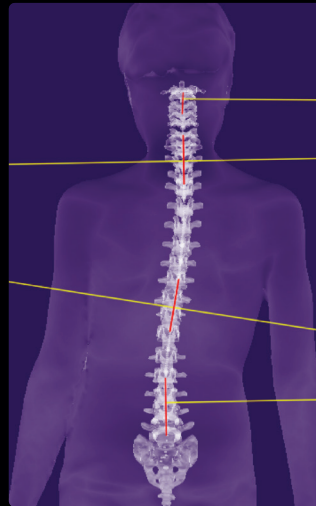


**ANTHROPOMETRY REPRESENTS AN  
INNOVATIVE BREAKTHROUGH IN  
POSTURAL ANALYSIS AND THE  
DIAGNOSIS OF SPINAL DEFORMITIES,  
OFFERING A COMPLETE THREE-DIMENSIONAL  
VIEW OF THE PATIENT'S BODY**





## 3D RECONSTRUCTION OF THE SPINE

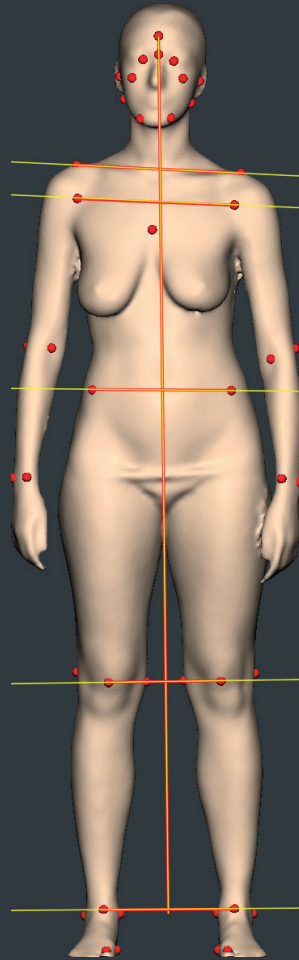




**THREE-DIMENSIONAL POSTURAL  
EXAMINATION IN JUST 30 SECONDS  
WITHOUT X-RAYS**



# FRONT ANTERIOR PLANE SYMMETRIES AND LENGTHS



PROPERTY	UNIT	VALUE	NOTES
Body Height	cm	165.3	-
Body Weight Distribution	kg %	53.7	(Right) 47% - 53% (Left)
Longitudinal Alignment	mm	17	Inclined to the right
Cranial Alignment	mm	-	Facing forward
Ocular Alignment	mm	-	Right > Left
Zygomatic Alignment	mm	-	Right > Left
Shoulder Alignment	mm	10	Right > Left
Pelvic Alignment	mm	5	Right > Left
Sternal Alignment	mm	4	Right > Left
Rotuleal Angle (Right)	°	179.2	Right kneecap angle (VPN = 180° (±3°) – VPN = ±10°)
Rotuleal Angle (Left)	°	177.7	Left kneecap angle (VPN = 180° (±3°) – VPN = ±10°)
Malleolar Alignment	mm	1	Right > Left
Intermalleolar Angle	mm	tbd	-
Upper Limb Symmetry	mm	2.9	Upper limb Left < Right
Lower Limb Symmetry	mm	5.6	Lower limb Left > Right
Thigh Length (Left)	cm	24.7	Left thigh < Right
Thigh Length (Right)	cm	24.9	-
Leg Length (Left)	cm	40.7	-
Leg Length (Right)	cm	39.9	Left leg > Right

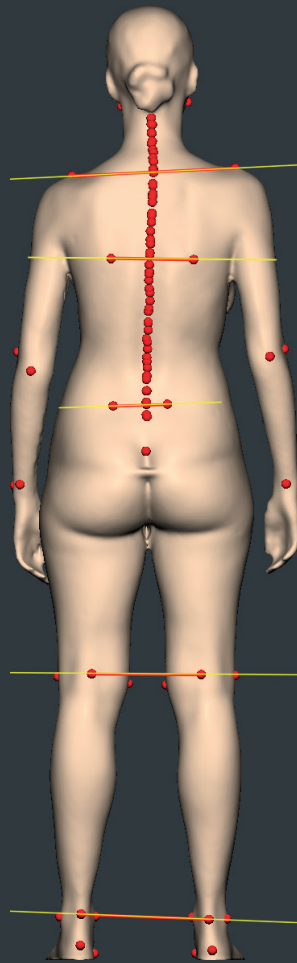
**AUTOMATIC  
PROCESSING OF  
THE 3D MODEL**



**WITH HIGH  
PRECISION**



# FRONT POSTERIOR PLANE SYMMETRIES AND LENGTHS



PROPERTY	UNIT	VALUE	NOTES
Trunk Length	CM	69.1	From C7 to gluteal fold
Scapular Alignment	MM	1	Right > Left
Iliac Crest Alignment	MM	TBD	Crests
SU Alignment	MM	3	Right > Left
Gluteal Fold Alignment	MM	5	Right > Left
Popliteal Alignment	MM	1	Right > Left
Retropied Axis Alignment (Left)	-	1.9	CV (inward)
Retropied Axis Alignment (Right)	-	1.3	CCV (inward)



**STRUCTURAL  
ANTHROPOMETRY**

**METABOLIC  
ANTHROPOMETRY**

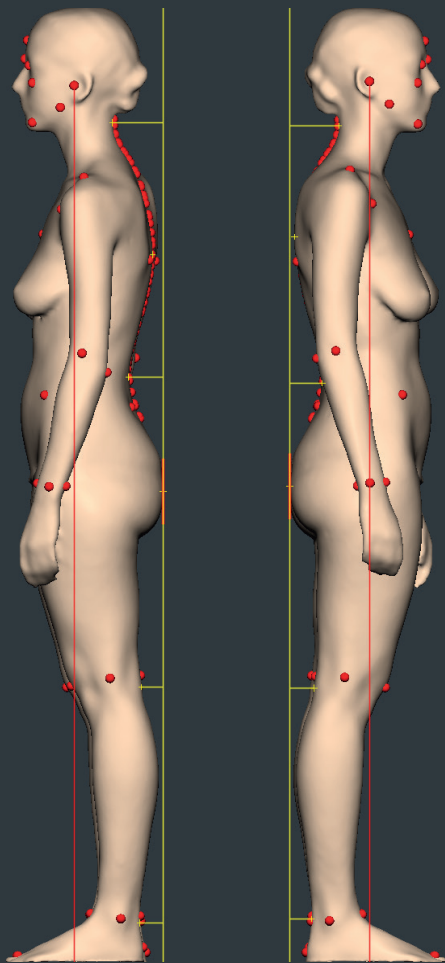
**COMPLETE  
POSTURAL  
ASSESSMENT**

**CLINICAL  
AND SPORTS  
PREVENTION**



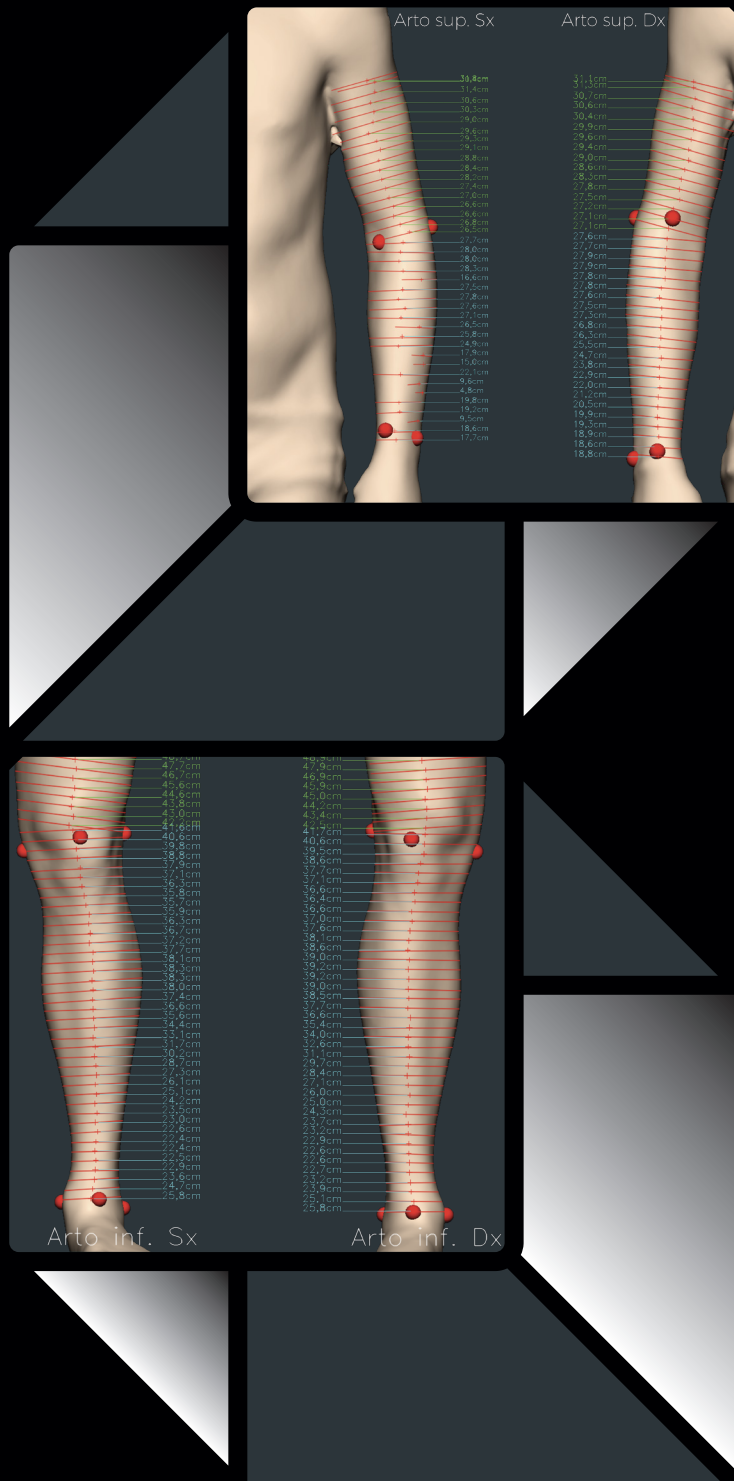


# SAGITTAL PLANE SYMMETRIES AND LENGTHS



PROPERTY	UNIT	VALUE	NOTES
Cranial Flexion Angle	-	23.0	Facing forward
Mandibular Angle (Right)	°	166.3	-
Mandibular Angle (Left)	°	150.8	-
Cervical Arrow (Right)	mm	84	Retroposture
Cervical Arrow (Left)	mm	87	Retroposture
Dorsal Arrow (Right)	mm	8	Retroposture
Dorsal Arrow (Left)	mm	18	Retroposture
Lumbar Arrow (Right)	mm	55	Retroposture
Lumbar Arrow (Left)	mm	60	Retroposture
Malleolar Arrow (Right)	mm	37	Retroposture
Malleolar Arrow (Left)	mm	40	Retroposture
Popliteal Arrow (Right)	mm	41	Retroposture
Popliteal Arrow (Left)	mm	38	Retroposture

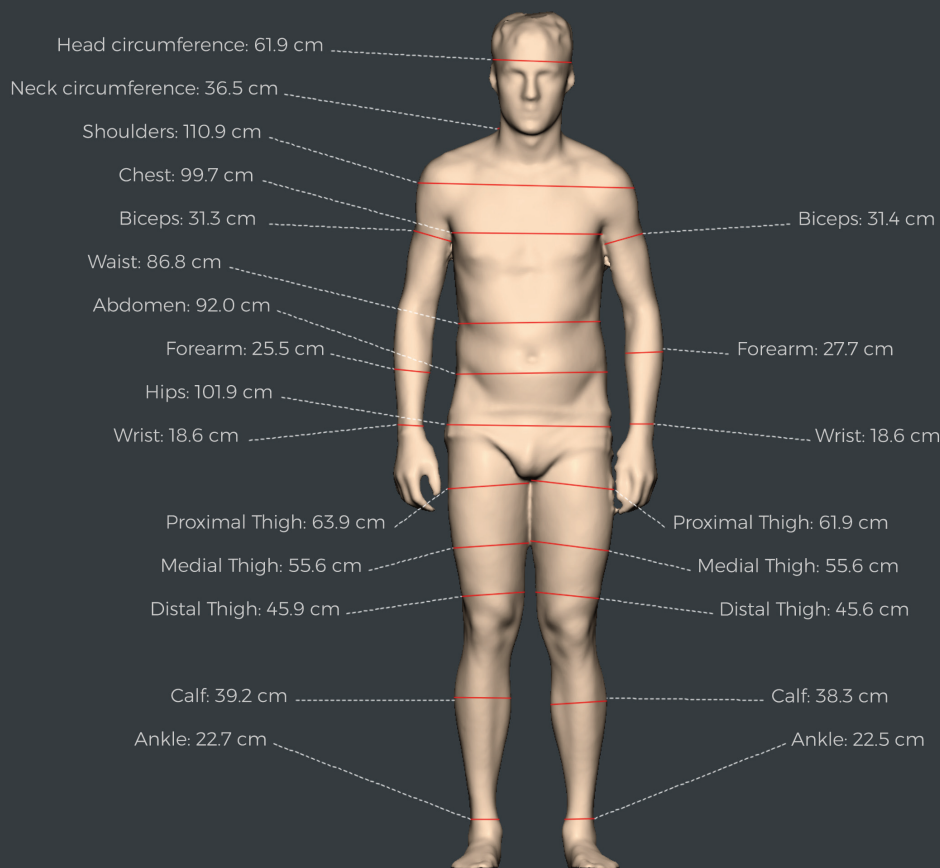
# UPPER AND LOWER LIMB VOLUMETRY



**BODY CIRCUMFERENCES – BODY SYMMETRIES**  
**LIMB LENGTHS – METABOLIC VALUES**  
**MUSCLE CHAINS – GLOBAL PHYSICAL HEALTH INDEX**



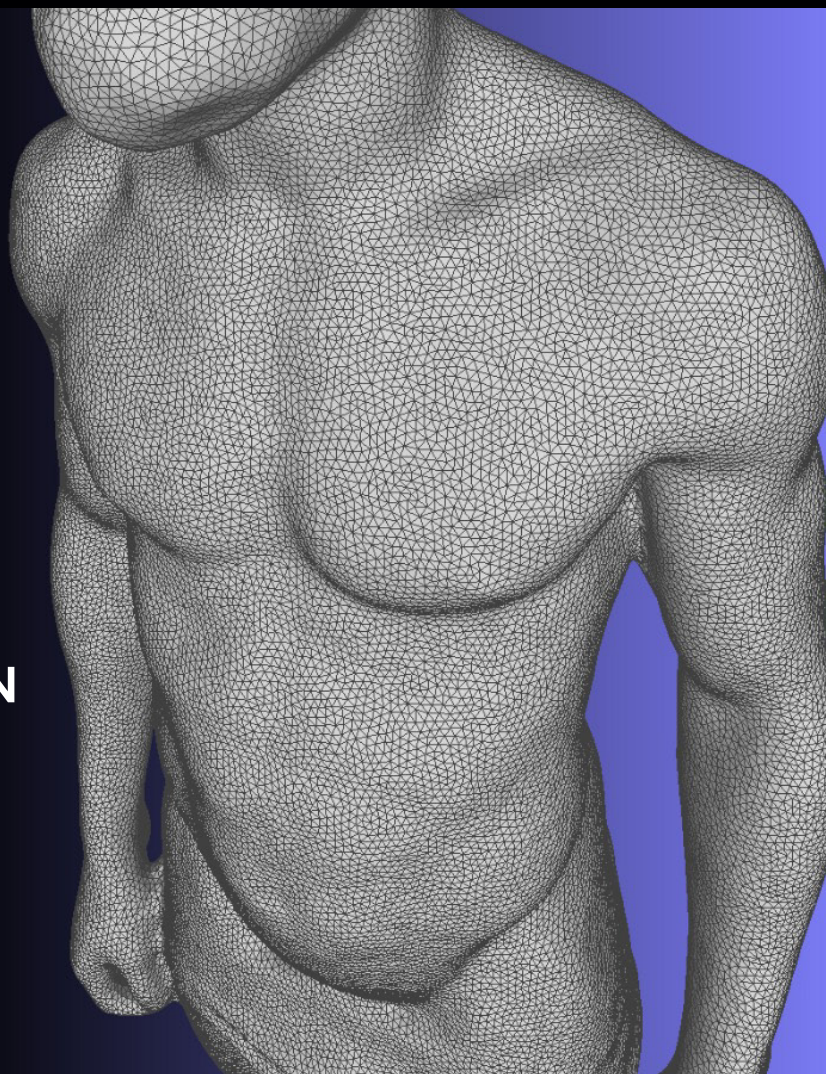
# CIRCUMFERENCES AND METABOLIC PARAMETERS



CHARACTERISTIC
Height
Weight
Weight Distribution (Left/Right)
Body Mass Index (BMI)
Waist-Height Ratio (WHtR)
Waist-Hip Ratio (WHR)
Body Fat Percentage (BF%)
Body Adiposity Index (BAI)
Fat-Free Mass Index (FFMI)
Lean Mass Percentage (BF%)
Basal Metabolism (BMR)
Bonora's Metabolic Formula
Body Shape Index (ABSI)
ABSI-z-score
Body Roundness Index (BRI)
Form Weight
Ideal Weight
Hydration Index (TBW%)
Arm Muscle Area (AMBA Apical)
Global Health Index (IGSF)



**HIGH-PRECISION  
MEASUREMENTS  
ACCURATE  
MEASUREMENTS  
DOWN TO LESS THAN  
ONE MILLIMETER,  
ALLOWING  
HIGH-PRECISION  
DETECTION CAPABLE  
OF IDENTIFYING EVEN  
THE SMALLEST  
ANATOMICAL AND  
POSTURAL  
VARIATIONS,  
PROVIDING  
HIGH-QUALITY DATA  
FOR CLINICAL AND  
DIAGNOSTIC INSIGHTS.**





**MEDICAL DEVICE  
CLASS I-II**



**PORTABLE  
SYSTEM**



## TECHNICAL SPECIFICATIONS

### SPECIFICATION VALUE



LOAD CAPACITY	160 KG
POWER SUPPLY	220V
SYSTEM WEIGHT	45 KG
SYSTEM WIDTH	81 CM
SYSTEM HEIGHT	200 CM
SYSTEM DEPTH	116 CM
PLATFORM HEIGHT	7 CM



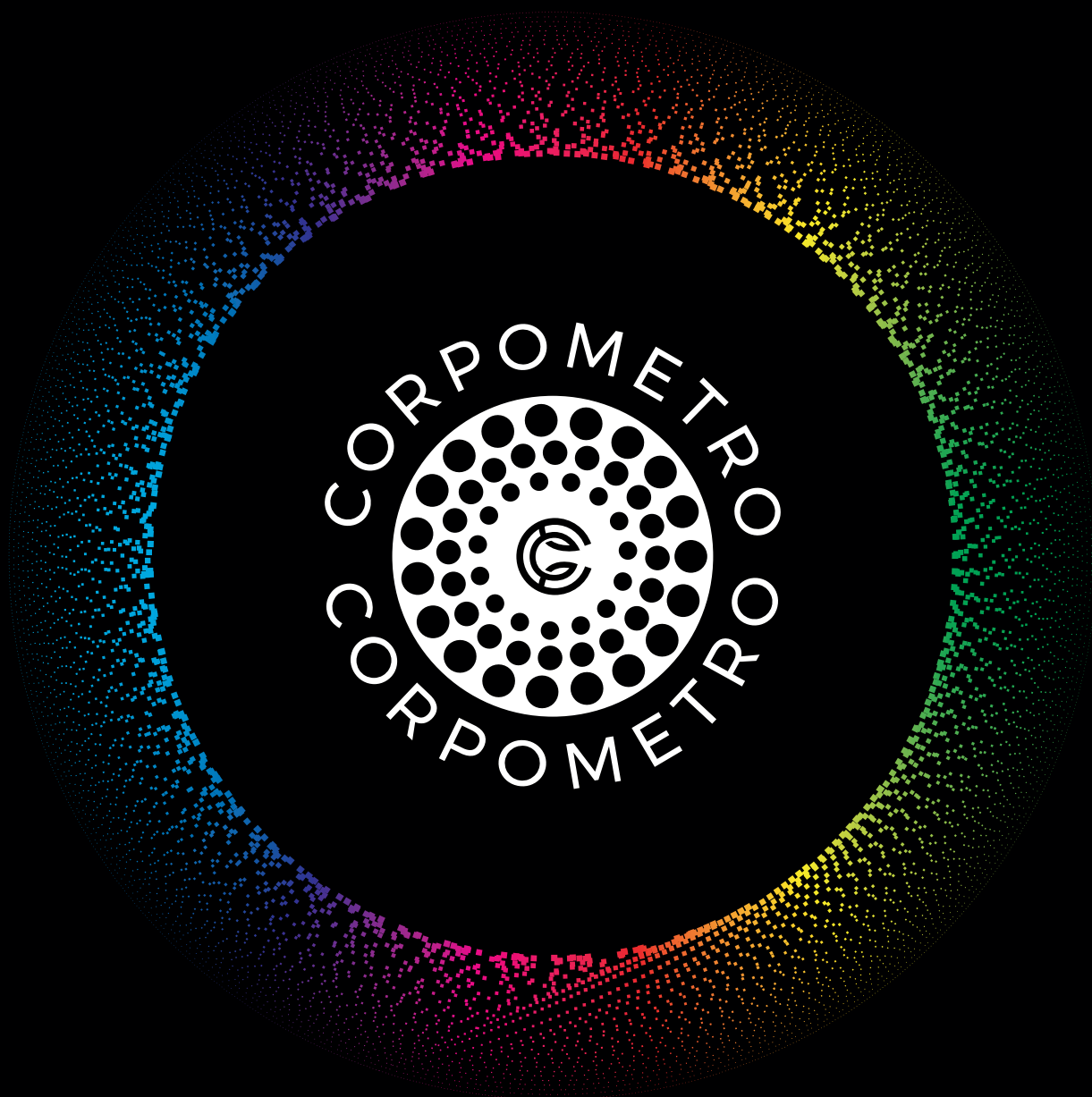
**REHASCAN3D**



## **REHASCAN 3D SOFTWARE 5 ON-DEMAND MODULES**

- **POSTURE**
- **SPINE**
- **CHAIN**
- **ALTIMETRY**
- **REPORT**





Corpometro is a registered trademark of BIOREDIX srl - 2025 All rights reserved

INTERNATIONAL DISTRIBUTION

**BIOREDIX**

INNOVATION IN DIAGNOSTIC POSTURE AND HEALTH

BIOREDIX S.R.L. - Address: VIA ACHILLE LORIA, 25 - 00191 ROME

Phone: +39-06.211 28134 - Email: [info@bioredix.com](mailto:info@bioredix.com)

[bioredix.com](http://bioredix.com)